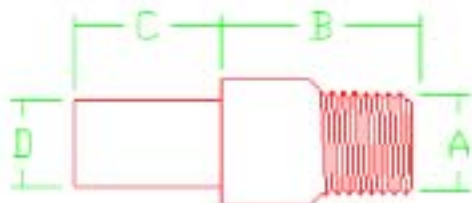




Phone: 763-786-6682  
 Fax: 763-786-2167  
 Toll Free: 888-355-5574  
 email: poly-cam@poly-cam.com

## Series 709

## Transition with Male CTS



| Nominal Size Inches | POLY-CAM Thread Material   | Coupling Diameter | Coupling Length | HDPE Length | HDPE Diameter |
|---------------------|--|-------------------|-----------------|-------------|---------------|
|                     |  | A                 | B               | C           | D             |
| .5                  | Epoxy coated Carbon Steel<br>303, 304, and 316<br>Stainless Steel<br>360 Brass       | 1.000             | 1.40            | 4.60        | 0.840         |
| .75                 | Epoxy coated Carbon Steel<br>303, 304, and 316<br>Stainless Steel<br>360 Brass       | 1.250             | 1.60            | 4.40        | 1.050         |
| 1                   | Epoxy coated Carbon Steel<br>303, 304, and 316<br>Stainless Steel<br>Aluminum Bronze | 1.500             | 2.40            | 3.60        | 1.315         |
| 1.25                | Epoxy coated Carbon Steel<br>303, 304, and 316<br>Stainless Steel<br>Aluminum Bronze | 1.750             | 2.60            | 3.40        | 1.660         |
| 1.5                 | Epoxy coated Carbon Steel<br>303, 304, and 316<br>Stainless Steel<br>Aluminum Bronze | 2.000             | 2.60            | 3.40        | 1.900         |
| 2                   | Epoxy coated Carbon Steel<br>303, 304, and 316<br>Stainless Steel<br>Aluminum Bronze | 2.375             | 3.50            | 4.50        | 2.375         |

Fully pressure rated . Standard SDR sizes 7, 9, 11, 17  
 Manufactured to D1599, D1598, D3035 ASTM D3350