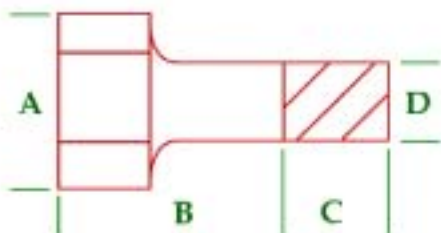




Phone: 763-786-6682
 Fax: 763-786-2167
 Toll Free: 888-355-5574
 email: poly-cam@poly-cam.com

Series 912

Flare Nut Transition Fitting Coupling SDR 11/9



Nominal Size Inches	POLY-CAM Threaded Material	Coupling Diameter A	Coupling Length B	HDPE Length C	HDPE Diameter D
.75	Brass	1.550	1.725	3.00	1.050
1.00	Brass	1.865	2.000	3.00	1.315
1.25	Brass	2.40	2.350	3.00	1.660
1.75	Brass	2.825	2.650	3.00	1.900
2.00*	Brass	3.550	3.500	4.00	2.375

*Stainless Steel insert required

The POLY-CAM Flare Nut Series 912

Product Specifications:

HDPE Pipe material.....PE 3408, ASTM-D3035, ASTM-714

Female Flare nut.....Brass Alloy C 360 AWWA C 800

Stainless Steel Insert.....304 Stainless Steel or 316 Stainless Steel

Note: All materials meet the requirements of NSF Standard #61

Product Applications:

The POLY-CAM, INC. Flare Nut Fitting provides a dependable fitting for the water industry. The flare nut can be installed with the standard socket, butt, and electrofusion equipment.

- Flare nut size range from .75 inch - 2 inch
- PE Pipe Sizes
 - Iron Pipe Size
- Available Pressure Ratings:
 - 160 PSI
 - 200 PSI

Test Standards

- ATSM D 1598: Sustained Pressure Test
- ATSM D 1599: Burst Pressure Test
- ATSM D 1588: Constant-Tesile Load Joint Test (CTLJT)