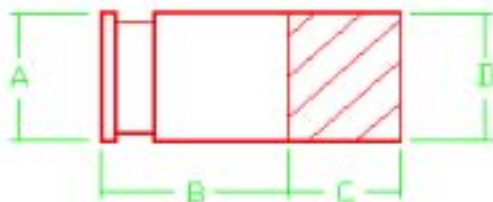




Phone: 763-786-6682
 Fax: 763-786-2167
 Toll Free: 888-355-5574
 email: poly-cam@poly-cam.com

Series 701

Transition with Cut Groove



Nominal Size Inches	POLY-CAM Cut Groove Material	Coupling Diameter	Coupling Length	HDPE Length	HDPE Diameter
		A	B	C	D
1.5	Epoxy coated Carbon Steel 304, and 316 Stainless Steel	1.900	2.60	3.40	1.900
2	Epoxy coated Carbon Steel 304, and 316 Stainless Steel	2.375	3.00	5.00	2.375
3	Epoxy coated Carbon Steel 304, and 316 Stainless Steel	3.500	4.00	4.00	3.500
4	Epoxy coated Carbon Steel 304, and 316 Stainless Steel	4.500	4.00	4.00	4.500
5	Epoxy coated Carbon Steel 304, and 316 Stainless Steel	5.563	5.00	7.00	5.563
6	Epoxy coated Carbon Steel 304, and 316 Stainless Steel	6.625	5.00	7.00	6.625
8	Epoxy coated Carbon Steel 304, and 316 Stainless Steel	8.625	7.00	6.00	8.625
10	Epoxy coated Carbon Steel 304, and 316 Stainless Steel	10.750	8.00	7.00	10.750
12	Epoxy coated Carbon Steel 304, and 316 Stainless Steel	12.750	9.00	7.00	12.750
14	Epoxy coated Carbon Steel 304, and 316 Stainless Steel	14.000	9.00	7.00	14.000
16	Epoxy coated Carbon Steel 304, and 316 Stainless Steel	16.000	12.00	12.00	16.000
18	Epoxy coated Carbon Steel 304, and 316 Stainless Steel	18.000	14.00	10.00	18.000
20	Epoxy coated Carbon Steel 304, and 316 Stainless Steel	20.000	16.00	12.00	20.000
24	Epoxy coated Carbon Steel 304, and 316 Stainless Steel	24.000	18.00	12.00	24.000

Fully pressure rated . Standard SDR sizes 7, 9, 11, 17
 Manufactured to D1599, D1598, D3350