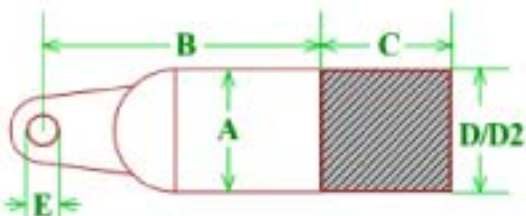




Phone: 763-786-6682  
 Fax: 763-786-2167  
 Toll Free: 888-355-5574  
 email: poly-cam@poly-cam.com

## Series 650

## The POLY-CAM Pulling Head



Nominal Size Inches	Material	Pulling Head Diameter	Pulling Head Length	HDPE Length	Diameter D	Diameter D2	Eyebolt Hole Diameter
IPS	Carbon Steel	A	B	C	IPS	DIPS	E
2	Carbon Steel	2.375	4.0	5.0	2.375	---	1.187*
3	Carbon Steel	3.500	6.0	5.0	3.500	---	1.500*
4	Carbon Steel	4.500	7.0	5.0	4.500	4.80	1.812*
5	Carbon Steel	5.563	8.5	7.0	5.563	---	2.187*
6	Carbon Steel	6.625	10.0	8.0	6.625	6.90	2.500*
8	Carbon Steel	8.625	11.0	8.0	8.625	9.05	3.250*
10	Carbon Steel	10.75	13.0	8.0	10.75	11.10	4.000*
12	Carbon Steel	12.75	15.0	8.0	12.75	13.20	4.000*
14	Carbon Steel	14.000	20.500	16.500	14.000	15.300	2.000
16	Carbon Steel	16.000	21.000	16.500	16.000	17.400	2.000
18	Carbon Steel	18.000	27.000	18.500	18.000	19.500	3.000
20	Carbon Steel	20.000	30.000	20.500	20.000	21.600	3.000
24	Carbon Steel	24.000	34.500	26.000	24.000	25.800	3.250
30	Carbon Steel	30.000	38.500	32.000	30.000	32.000	4.000

\* Forged Eyebolt

**Now available in Sizes thru 30"**

Rated at SDR11 - Heavy Duty Construction  
 ATSM 489, ANSI/ASME B18.15