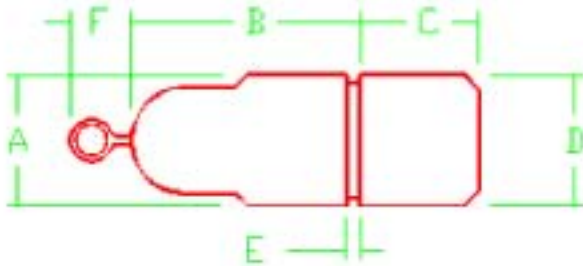




Phone: 763-786-6682
 Fax: 763-786-2167
 Toll Free: 888-355-5574
 email: poly-cam@poly-cam.com

Series 654

The POLY-CAM CERTA-LOK® Pulling Head



Nominal Size Inches	POLY-CAM Pulling Head Material	Pulling Head Diameter A	B	C	Groove Width D	Eye Bolt Length E	Eye Bolt Size Inches	Safe Work-Load (lbs.)
4	Carbon Steel	4.800	7.0	2.625	0.375	3.50	0.875	7000
6	Carbon Steel	6.900	10.0	2.625	0.375	5.00	1.250	15000
8	Carbon Steel	9.050	11.0	2.663	0.500	7.00	1.750	28000
10	Carbon Steel	11.100	13.0	3.000	0.500	8.00	2.000	38000
12	Carbon Steel	13.200	15.0	3.000	0.500	9.00	2.500	56000

Rated at SDR11 . Heavy Duty Construction
 ATSM 489, ANSI/ASME B18.15

11/00 © Registered Trademark Poly-Cam, Inc. - US Patent # 5,211,429