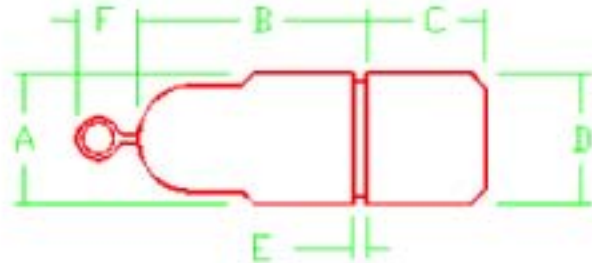




Phone: 763-786-6682
 Fax: 763-786-2167
 Toll Free: 888-355-5574
 email: poly-cam@poly-cam.com

Series 653



The POLY-CAM Yelomine[®] Pulling Head



Nominal Size Inches	POLY-CAM Pulling Head Material	Pulling Head Diameter	Pulling Head Length	Eye Bolt Length	Eye Bolt Size Inches	Safe Work-Load (lbs.)
		A	B	C		
2	Carbon Steel	2.375	4.0	2.25	0.438	1800
3	Carbon Steel	3.500	6.0	3.00	0.625	4000
4	Carbon Steel	4.500	7.0	3.50	0.875	7000
5	Carbon Steel	5.563	8.5	4.75	1.125	9000
6	Carbon Steel	6.625	10.0	5.00	1.250	15000
8	Carbon Steel	8.625	11.0	7.00	1.750	28000
10	Carbon Steel	10.750	13.0	8.00	2.000	38000
12	Carbon Steel	12.750	15.0	9.00	2.500	56000

Rated at SDR11 . Heavy Duty Construction
 ATSM 489, ANSI/ASME B18.15

11/00 © Registered Trademark Poly-Cam, Inc. - US Patent # 5,211,429