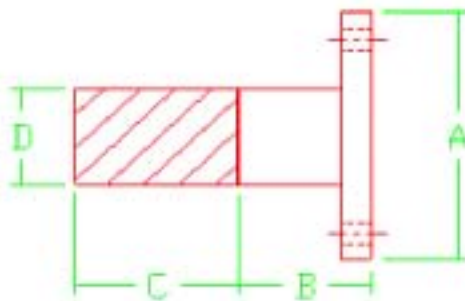


Series 817

Flanged Transition for Gas



Nominal Size Inches	POLY-CAM Flanged End Material	Flange End Diameter (inches) A	Flange End Length (inches) B	HDPE Length (inches) C	HDPE Diameter (inches) D
2	Epoxy coated Carbon Steel 304, and 316 Stainless Steel	6.00	3.50	4.50	2.375
3	Epoxy coated Carbon Steel 304, and 316 Stainless Steel	7.50	4.00	4.00	3.500
4	Epoxy coated Carbon Steel 304, and 316 Stainless Steel	9.00	4.50	4.00	4.500
5	Epoxy coated Carbon Steel 304, and 316 Stainless Steel	10.00	5.00	7.00	5.625
6	Epoxy coated Carbon Steel 304, and 316 Stainless Steel	11.00	4.50	7.50	6.625
8	Epoxy coated Carbon Steel 304, and 316 Stainless Steel	13.33	7.00	8.00	8.625
10	Epoxy coated Carbon Steel 304, and 316 Stainless Steel	16.00	8.00	8.00	10.750
12	Epoxy coated Carbon Steel 304, and 316 Stainless Steel	19.00	9.00	7.00	12.750

Stainless Steel Insert

Fully pressure rated . Standard SDR sizes 7, 9, 11, 17
 Manufactured to ASTM D—2513-96a, D1599, D1598, DOT Part 196.281 and 192.283
 11/00 © Registered Trademark Poly-Cam, Inc. - US Patent # 5,211,429