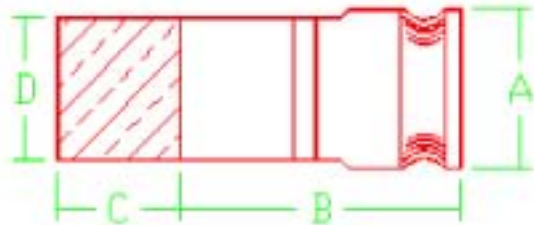




Phone: 763-786-6682
 Fax: 763-786-2167
 Toll Free: 888-355-5574
 email: poly-cam@poly-cam.com

Series 641

The Camlock/HDPE Male Transition



Nominal Size Inches	POLY-CAM Camlock/HDPE Material	Coupling Diameter	Coupling Length	HDPE Length	HDPE Diameter
		A	B	C	D
2	Carbon, Alum, Brass, Ductile, and 316 Stainless Steel	2 1/2	6.0	4.00	2.375
3	Carbon, Alum, Brass, Ductile, and 316 Stainless Steel	3 7/8	6.5	4.00	3.500
4	Carbon, Alum, Brass, Ductile, and 316 Stainless Steel	4 11/16	7.0	5.00	4.500
6	Carbon, Alum, Brass, Ductile, and 316 Stainless Steel	6 13/16	8.0	7.00	6.625
8	Carbon, Alum, Brass, Ductile, and 316 Stainless Steel	9	10.0	8.00	8.625

Caps, Dust Plugs and Hose Shanks also Available

11/00 © Registered Trademark Poly-Cam, Inc. - US Patent # 5,211,429